

Junior Regional Orchestra Scales For Violin

ed. Joli Brooks

C major

Violin

-1

Detailed description: This block shows the first four measures of a C major scale in 3rd position. The key signature has one sharp (F#). The time signature is 2/4. The notes are G4, A4, B4, C5, B4, A4, G4. The first measure has a '-1' below it. The notes are grouped with slurs and some have fingerings indicated.

Play entire scale in 3rd position.

Detailed description: This block shows measures 5-8 of the C major scale in 3rd position. It includes triplets and slurs. The notes are G4, A4, B4, C5, B4, A4, G4. The key signature has one sharp (F#).

G major

-1
3rd pos.

Detailed description: This block shows measures 9-11 of a G major scale in 3rd position. The key signature has two sharps (F# and C#). The notes are D4, E4, F#4, G4, F#4, E4, D4. The first measure has a '-1' below it. The notes are grouped with slurs.

-2 4 3 0 -1 3 3 0 -2

3rd pos.

Detailed description: This block shows measures 12-15 of the G major scale in 3rd position. It includes triplets and slurs. The notes are D4, E4, F#4, G4, F#4, E4, D4. The key signature has two sharps (F# and C#). Fingerings are indicated below the notes: -2, 4, 3, 0, -1, 3, 3, 0, -2.

D major

-1
3rd pos.

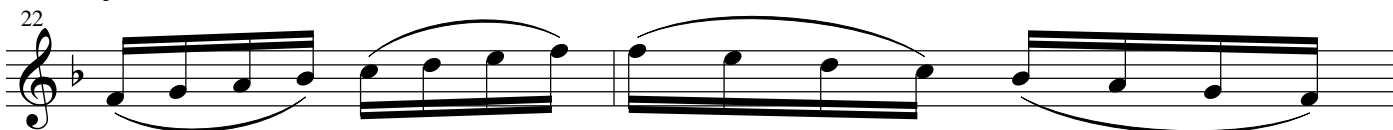
Detailed description: This block shows measures 16-18 of a D major scale in 3rd position. The key signature has two sharps (F# and C#). The notes are A4, B4, C#5, D5, C#5, B4, A4. The first measure has a '-1' below it. The notes are grouped with slurs.

-2 4 3 0 -1 3 3 0 -2

3rd pos.

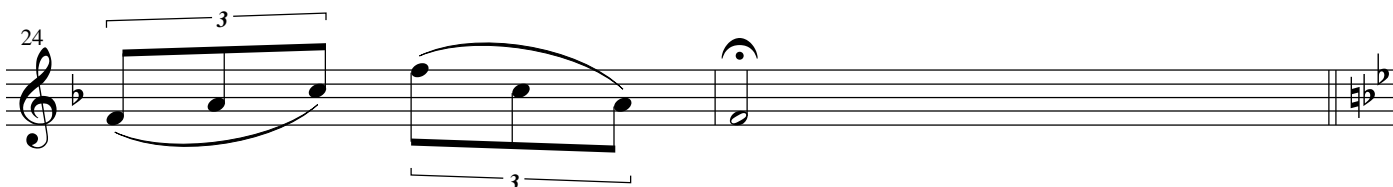
Detailed description: This block shows measures 19-22 of the D major scale in 3rd position. It includes triplets and slurs. The notes are A4, B4, C#5, D5, C#5, B4, A4. The key signature has two sharps (F# and C#). Fingerings are indicated below the notes: -2, 4, 3, 0, -1, 3, 3, 0, -2.

F major

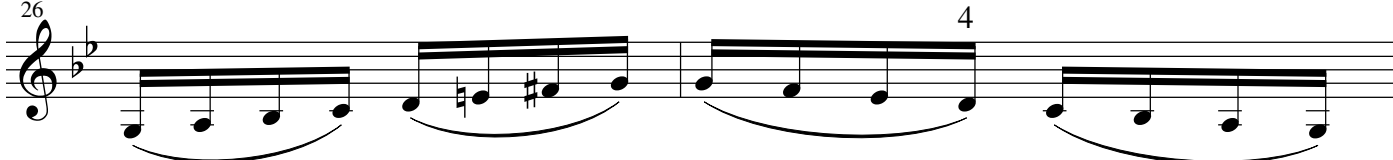


-1
2nd pos.

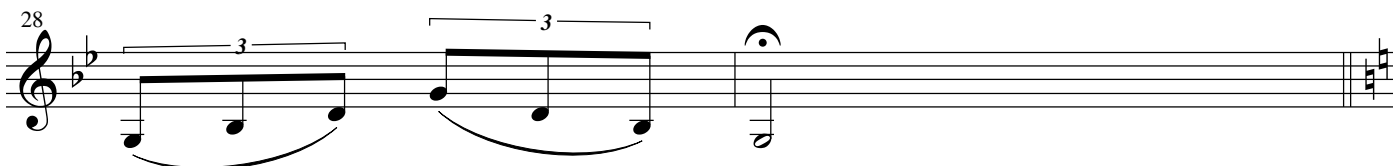
Play entire scale in 2nd position.



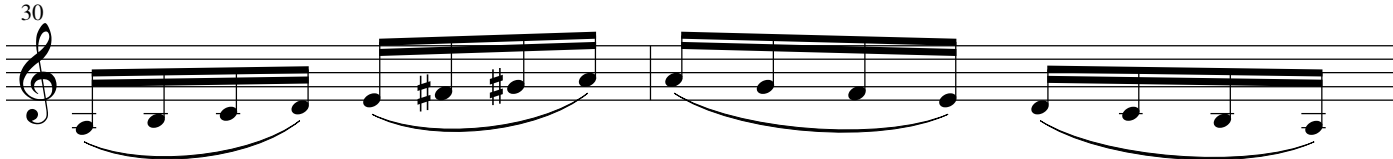
G melodic minor



Play entire scale in 1st position.



A melodic minor



Play entire scale in 1st position.

